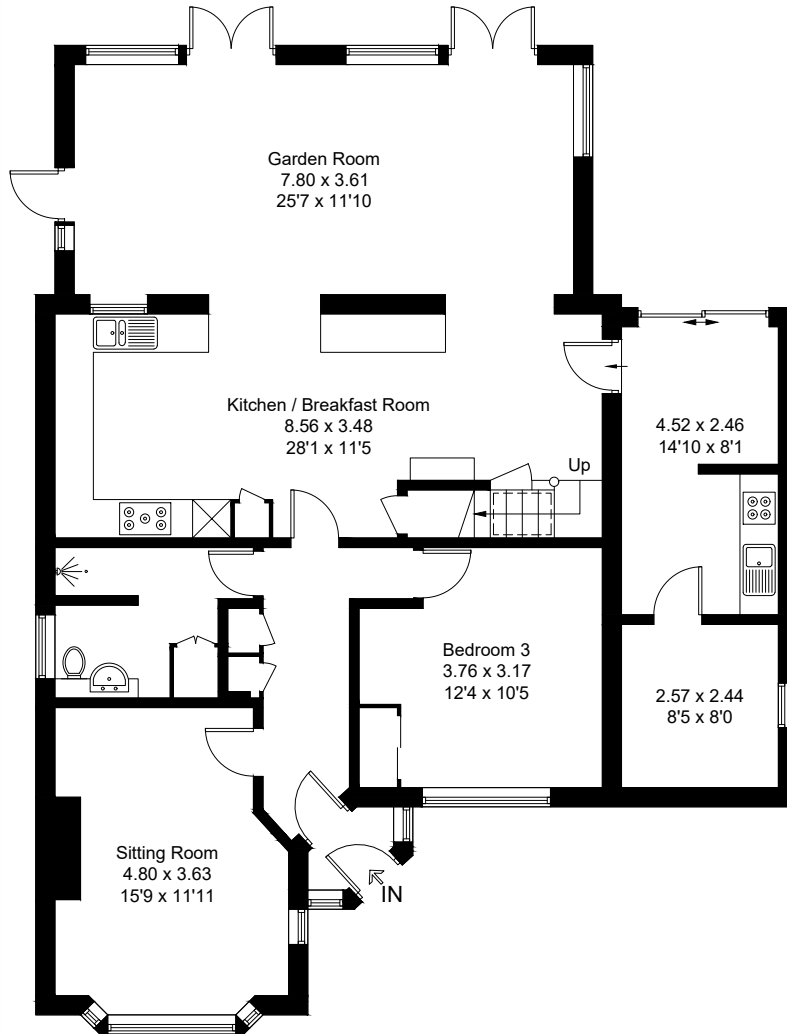

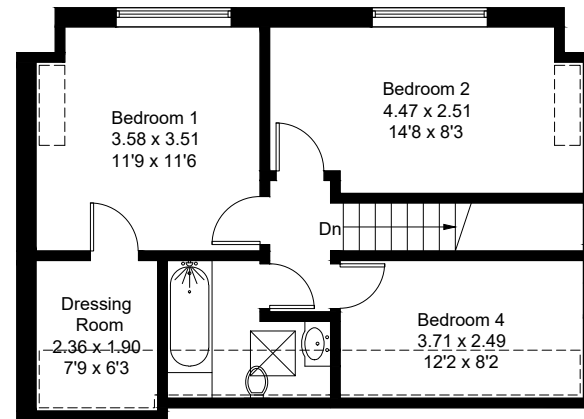


Approximate Gross Internal Area = 178.9 sq m / 1926 sq ft



Ground Floor

 = Reduced headroom below 1.5m / 5'0



First Floor

Created by **BAY TREE ESTATES - Telephone 01243 850451.**

These plans are for representation purposes only as defined by RICS - Code of Measuring Practice. Not to scale.(ID1000781)